

ARE YOU PLANNING ON TAKING AN ONLINE CLASS?

Northwest State Community College requires that all students pass an Online Learning Readiness (OLR) assessment before taking an online class.

You must pass this assessment before registering for any online class.

The OLR assessment is in Sakai, NSCC's online learning platform. You will find the link for Sakai on the College homepage, or you can go directly to <http://sakai.northweststate.edu>.

Your Sakai username is your NSCC email address and your password is your myNSCC password.

Need Help?

Contact the NSCC
Teaching & Learning Center

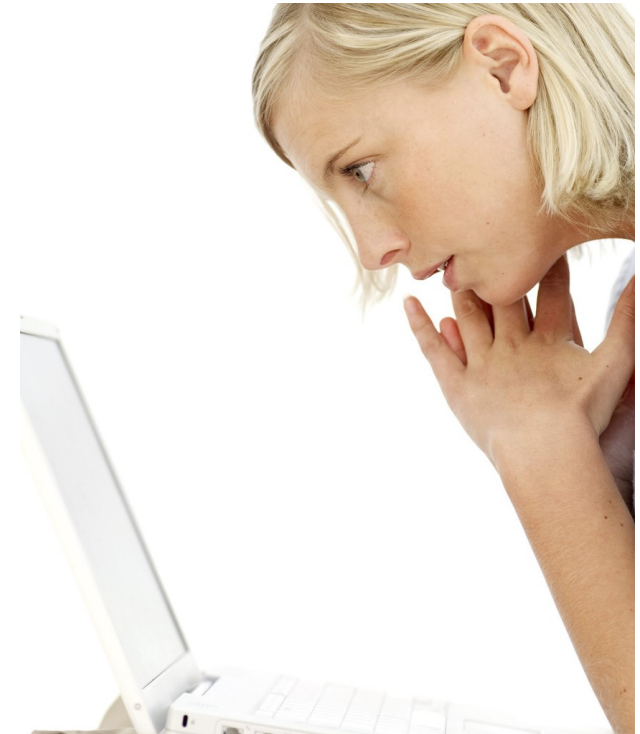
(419) 267-1428

distancelearning@NorthwestState.edu

NorthwestState.edu/distance-learning



REGISTERING FOR ONLINE CLASSES ?



ONLINE
LEARNING
READINESS
ASSESSMENT



The Online Learning Readiness Assessment

includes information that will help you succeed in your online classes.

Topics include:

Online Learning: A brief overview of what online classes are and how they are different from the face-to-face, web-enhanced, or hybrid classes also offered by NSCC.

Computer Competency: A review of basic computer skills and knowledge that you would be expected to have in an online class.

Sakai Overview: A look at NSCC's online course portal, including where you'll find your notes and instructions, assignments, tests and quizzes, discussion forums, and your grades.



Life Factors: A description of some of the personal and life factors that will affect your success in an online class, including motivation, time management, and support.

In an Online Class: Information on contacting your instructor, viewing feedback and participating in your online classes.



Myths & Truths: A look at some of the most common myths and misconceptions about online classes.

STEPS TO ACCESS THE OLR

1. Log in to Sakai
2. Click on "Membership" in the left navigation pane.
3. Click on the "Joinable Sites" button at the top.
4. Find "OLR Assessment" in the list and click on Join.
5. Click on the "Sites" menu at the top right.
6. Locate and click on "OLR Assessment" under the Projects heading.
7. Follow the instructions on the home page to view the content and complete the test.

You can also find a link to join the OLR site in the Student Orientation Sakai site.



THINGS TO KNOW ABOUT THE OLR

- ◆ You will need to add yourself to the OLR Assessment site in Sakai. Students are not automatically added.
- ◆ You can read through all of the six content modules, or review only what you may need.
- ◆ The test is 19 multiple-choice questions.
- ◆ You must score a 75% to pass. You can see your score under Tests & Quizzes or the Gradebook.
- ◆ If you fail the OLR, you can review the questions you missed and try again. You have unlimited attempts to pass the test.
- ◆ Once you pass the OLR, you can register for any future online classes without having to retake the test.
- ◆ **You must pass the OLR before registering for any online class.**